

# INB813Z-RTE

## 8 Megapixel Digital WDR Bullet Camera with IR LED

Infinique offers a wide range of IP based high definition cameras available in various housing formats, including Box, Dome and Bullet. Our cameras are equipped with superior image sensor and digital signal processor to produce sharp, crisp pictures and are enclosed in weather and vandal resistant housings making it suitable for use in all security applications. The ONVIF compliance of the cameras helps in easy integration, providing peace of mind for your investment. From small to very large installations, Infinique’s cameras are reliable, future proof and an ideal solution for your video surveillance needs.

The INB813Z-RTE is a 8 Megapixel IP IR bullet camera incorporating a 1/2.8" high quality image sensor and has a digital wide dynamic range providing sharp images and a wide field of view maintaining high level of image detail even when the video is digitally zoomed. It's powerful array LEDs providing clear crisp images during the night for a distance of up to 45 meters.

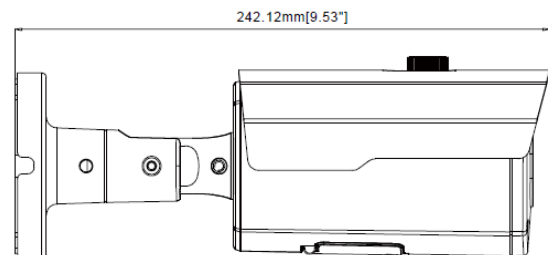
The camera comes equipped with a 2.8~12mm motorized lens with remote zoom and focus for easy setup of field of view. Auto Iris control allows the camera to automatically set its iris position to maximize image quality in all lighting conditions. The camera streams real-time video at high definition resolution using H.265 or H.264 compression optimizing the bandwidth and increasing storage efficiency.

Built-in PoE for powering the camera and the concealed cable bracket for fixing it on ceiling or wall, provides the convenience for installers to complete the installation quickly and with ease. These excellent IP cameras are highly suitable for video surveillance of government buildings, residential apartments, schools, colleges, universities, shopping malls, hospitals, hotels, industrial parks, corporate offices and can also be used for Vehicle Number Plate Recognition (NPR) applications.



ONVIF

### Dimensions



### Product Features

- 1/2.8" Progressive Scan CMOS Image Sensor
- 8 Megapixel Resolution at 20 fps
- 8 pcs IR Array LED, IR Distance 45 meters
- 2.8~12mm Motorized Zoom Lens
- Digital WDR
- H.265, H.264 Compression
- Up to 3 Simultaneous Video Streams
- Composite Video Output
- IP67 Rated
- Micro SD Card Slot for Onboard Storage
- Power Over Ethernet (PoE), IEEE 802.3af
- Vandal Proof Aluminum Alloy Housing
- Wall or Ceiling mount with Concealed Cable Bracket
- ONVIF Compliant

### Accessories



Part Number: IBBWM-134  
Wall Mount Junction Box



Part Number: IBBCEM-134  
Ceiling Mount Junction Box



Part No: IBKTCM  
Pendant Ceiling Bracket



Part No: IBBCPM  
Pole Mount Bracket

# INB813Z-RTE

## 8 Megapixel Digital WDR Bullet Camera with IR LED



IMAGE PERFORMANCE	
Image Sensor	1/2.8" Progressive CMOS
Effective Pixels (H x V)	3840 × 2160
Resolution (Megapixels)	8
Minimum Illumination	0.002 lux (AGC ON) 0 lux with IR ON
Image Rate (fps)	20fps, adjustable for all resolutions
IR (m)	45
S/N Ratio	More than 50dB
LENS	
Focal Length (mm)	2.8~12 Motorized Zoom Lens
Iris	DC Auto Iris
Aperture Ratio	F1.8
Angle of View (deg)	H:111 (Wide)~33 (Tele), V:57 (Wide)~18 (Tele)
VIDEO AND AUDIO	
Video Compression	H.265 Main Profile H.264 Baseline Profile/Main Profile/High Profile
Main Stream	3840x2160, 2592x1944, 3072x1728, 2592x1520, 2304x1296, 1920x1080, 1280x960, 1280x720
Sub Stream	1920x1080, 1280x720, 640x480, 320x240
Mobile Stream	640x480, 320x240
Electronic Shutter Control	1/5 ~ 1/20000
Day/Night Control	Automatic / Manual
Flicker Control	50 Hz, 60 Hz
WDR Type	Digital WDR
3D Noise Reduction	Auto / Manual / Disable
White Balance	Auto / Manual / Indoor
Back Light Compensation	On / Off
High Light Compensation	On / Off
Automatic Gain Control	Adjustable Level
Privacy Mask Zones	Up to 4 Privacy Mask Zones
Audio Input / Output	Line level input and output, 3.5mm A/V Interface
Video Output	BNC
RS-485	1 RS485 Interface
Alarm I/O	1CH Alarm Input, 1CH Alarm Output
Video Bit rate	256Kbps~ ~1.6Mbps, Supports CBR/VBR
OSD	Camera ID, Timestamp
Image Orientation	Image Flip, Corridor Mode, Rotation
Image Controls	Brightness, Contrast, Hue, Saturation, Acu, Gamma
Advanced Functions	Image Rotation, Gain Control, Anti-Fog, Anti-False Color, Anti-Shake, IR Detection
VIDEO ANALYTICS	
Motion Detection	Multiple Zones
Advance Video Analytics	Tamper, Out Of Focus, Sound, Perimeter Intrusion, Line Crossing, Stationary Object, Pedestrian Detection, People Counting

LOCAL STORAGE	
Storage Type	Micro SD Card up to 256GB, Cloud Storage support
Recording	Video and Image; Auto / Schedule/ Manual / On Event
NETWORK	
Network Port	10/100M BASE-TX, RJ-45 Connector
Cabling Type	Category 6 and higher
Network Protocol	IPv4, HTTP, HTTPS, TCP/IP, Unicast/Multicast, UDP, RTP, RTSP, RTCP, DNS, DDNS, DHCP, FTP, NTP, PPPOE, SMTP, SNMP, UPNP, IEEE802.1X
ONVIF Protocol	ONVIF Compliant
Security	User Access with password protection, IP Filtering
Users	1 Administrator, 6 Users
PC Web Browser	IE 6.0 Above; Mozilla Firefox; Google Chrome
Mobile Device	Windows Mobile, Symbian, iPhone, Android
Events	Motion Detection, Tamper Detection, Sensor
Event Handlers	E-mail, Cloud, Alarm Out
MECHANICAL	
Housing ID	V4BOMWH670745A1
Dimensions (mm)	87 (W) x 242 (L) x 84 (H)
Weight (g)	650
Housing	Vandal Resistant Aluminum Alloy Housing
Finish	White Powder Coat, RAL 9003 (Standard) Gray Powder Coat, RAL 7021
Installation	Ceiling Mount / Wall Mount, Concealed Cable Bracket
ELECTRICAL	
Power Consumption	580mA, 12V DC, 7 Watts
Power Source	PoE IEEE802.3af; DC12V
Power Connector	DC Male Plug
RTC Backup Battery	3V Magnesium Lithium
ENVIRONMENTAL	
Operating Temperature (C)	-10° to +50° -10° to +60° when IR LEDs are off
Storage Temperature (C)	-20° to +60°
Operating Humidity	0% - 95% non condensing
Ingress Protection Rating	IP67
Impact Rating	IK07
STANDARDS COMPLIANCE	
Emissions	FCC Part 15 Subpart B Class B EN 55022:2010 IC ICES-003 Class B
Immunity	EN 55024:2010
Safety	UL 609501, EU: 2001/95/EC GPSPD

ORDERING INFORMATION	
PART NUMBER	DESCRIPTION
INB813Z-RTE	Infinique Premium Series IR Bullet Camera, 1/2.8" Sensor, 8MP, 20fps, 2.8~12mm Motorized Zoom Lens, IR Array LED, 45m IR Range, H.265, H.264, Three Streams, Digital WDR, TDN, Adjustable Bit Rate, ONVIF Compliant, Composite Video Out, SDHC Slot, PoE, IP67
IJBWWM-134	Infinique Wall Mount Junction Box, Base Diameter 134.3 mm
IJBBCM-134	Infinique Ceiling Mount Junction Box, Base Diameter 134.3 mm
IBKTCTM	Infinique Pendant Mount Ceiling Bracket, 45 (D) x 294 (H) mm
IBBCPM	Infinique Pole Mount Bracket with Metal Ties, 125 (L) x 46 (W) x 200 (H) mm

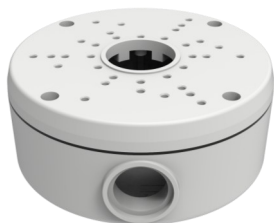
# INB813Z-RTE

8 Megapixel Digital WDR Bullet Camera with IR LED



## Housing Accessories

### WALL MOUNT APPLICATION



Junction Box  
IBBWM-134

### CEILING MOUNT APPLICATION



Junction Box  
IBBBCM-134

### PENDANT MOUNT APPLICATION



Ceiling Bracket  
IBKTCM

### POLE MOUNT APPLICATION



Pole Bracket  
IBBCPM



Junction Box  
IBBWM-134



Junction Box  
IBBBCM-134



Infinique, a Canadian company is a manufacturer of high performing end-to-end solutions in copper, fiber and video surveillance systems. For more information visit our website at [www.infinique.com](http://www.infinique.com) or email us at [sales@infinique.com](mailto:sales@infinique.com).