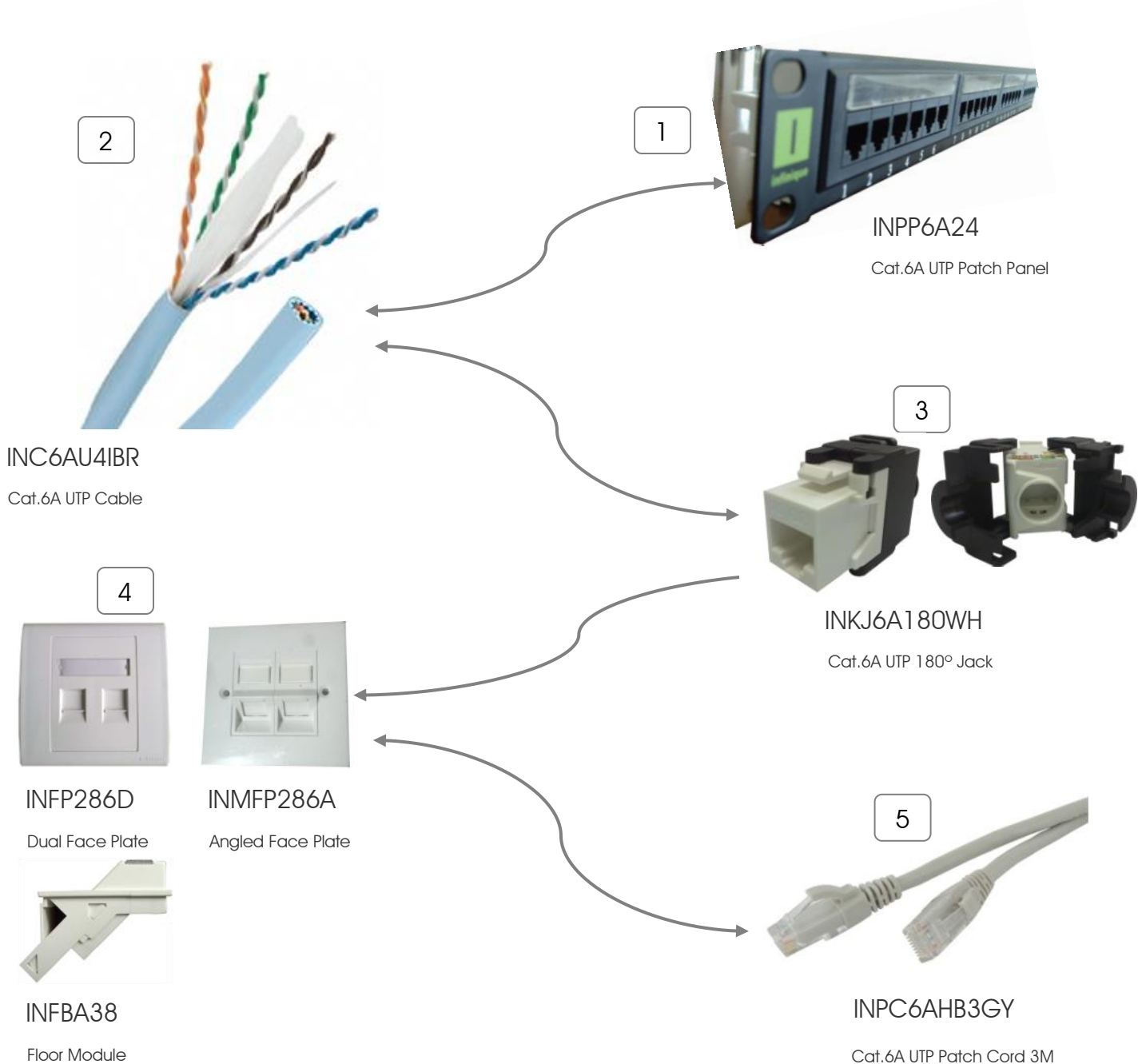


# Product Matrix - Copper Systems

Category 6A End-to-End Solution

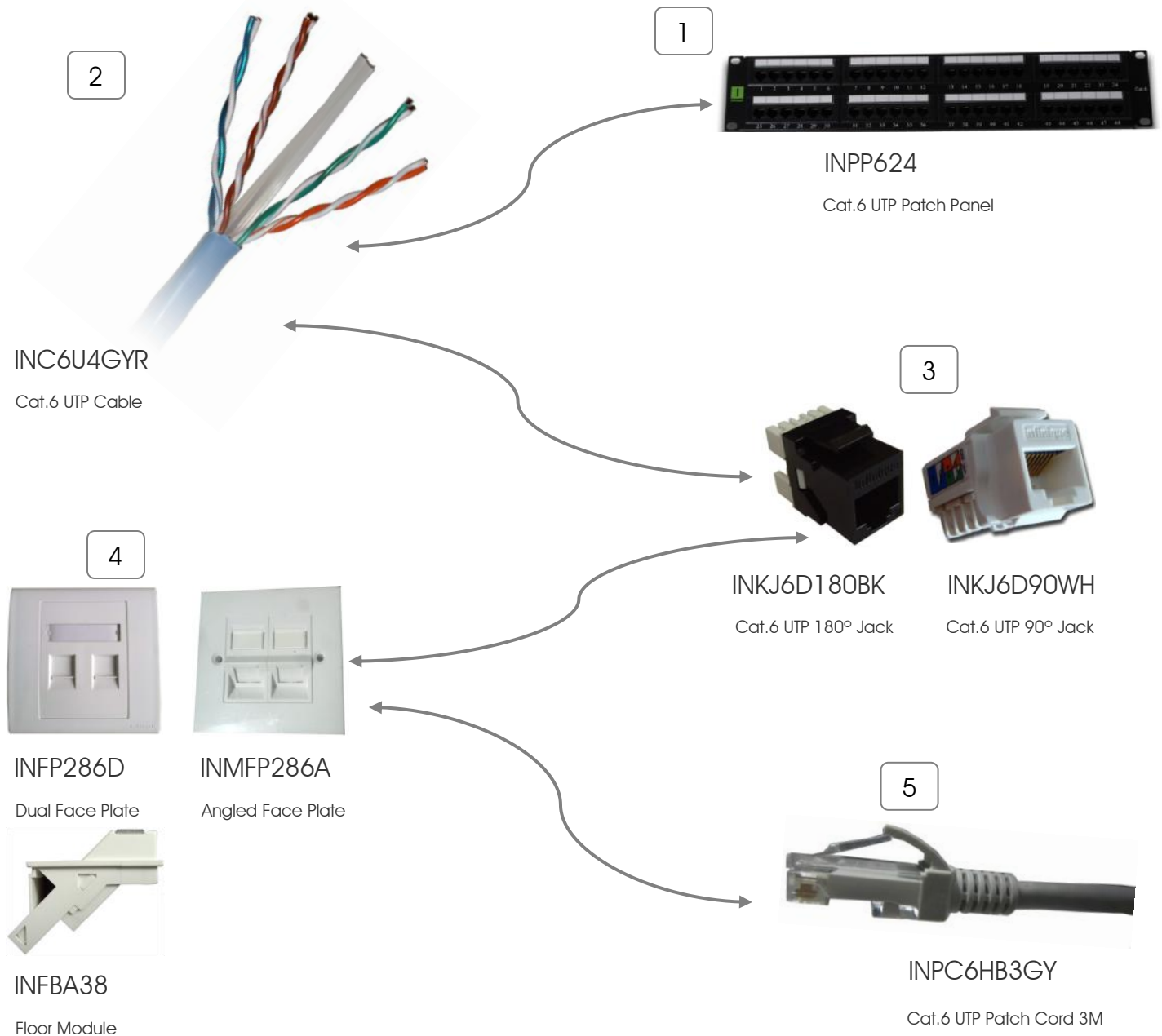


Infinique's Extended Product Warranty provides a 25-year product and applications assurance of compliance with the industry performance standards appropriate to the class of cabling installed. This is a link performance warranty, covering patch panel to outlet and may be applied for by an Authorized Infinique's Channel Partner who has designed, supplied and installed the system.



# Product Matrix - Copper Systems

Category 6 UTP End-to-End Solution

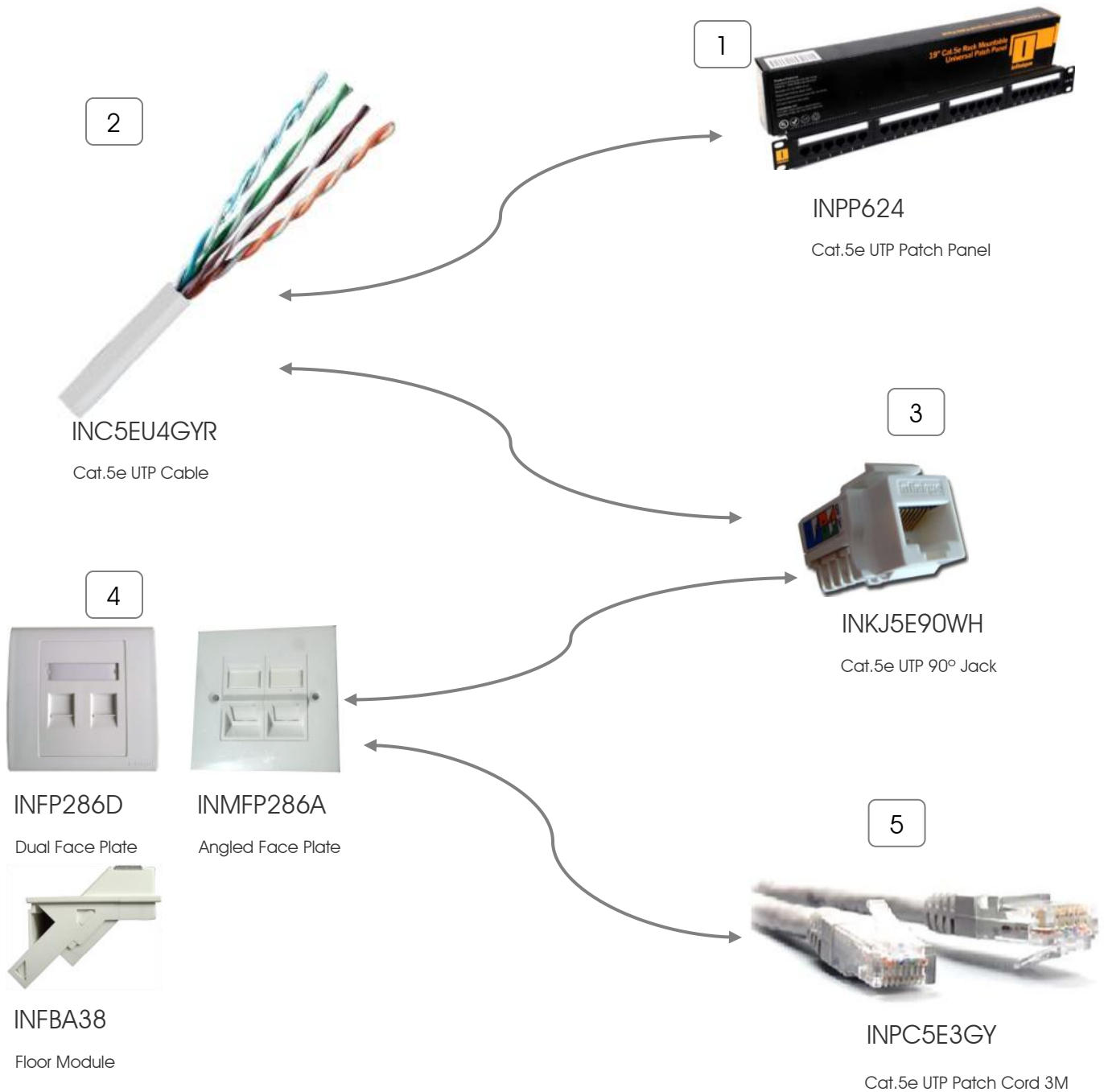


Infinique's Extended Product Warranty provides a 25-year product and applications assurance of compliance with the industry performance standards appropriate to the class of cabling installed. This is a link performance warranty, covering patch panel to outlet and may be applied for by an Authorized Infinique's Channel Partner who has designed, supplied and installed the system.



# Product Matrix - Copper Systems

Category 5e UTP End-to-End Solution

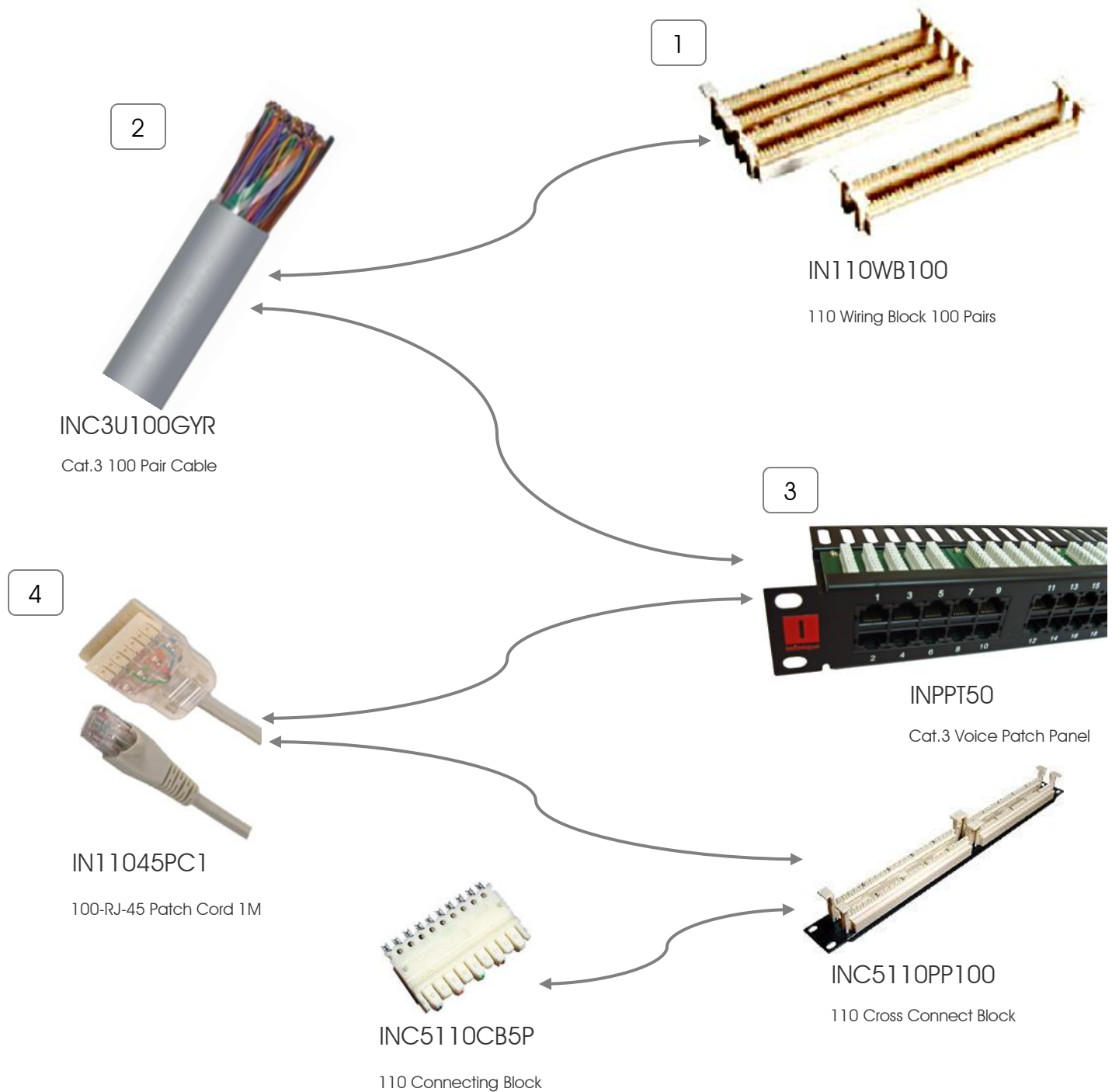


Infinique's Extended Product Warranty provides a 25-year product and applications assurance of compliance with the industry performance standards appropriate to the class of cabling installed. This is a link performance warranty, covering patch panel to outlet and may be applied for by an Authorized Infinique's Channel Partner who has designed, supplied and installed the system.



# Product Matrix - Copper Systems

Category 3 UTP End-to-End Solution



Infinique's Extended Product Warranty provides a 25-year product and applications assurance of compliance with the industry performance standards appropriate to the class of cabling installed. This is a link performance warranty, covering patch panel to outlet and may be applied for by an Authorized Infinique's Channel Partner who has designed, supplied and installed the system.

