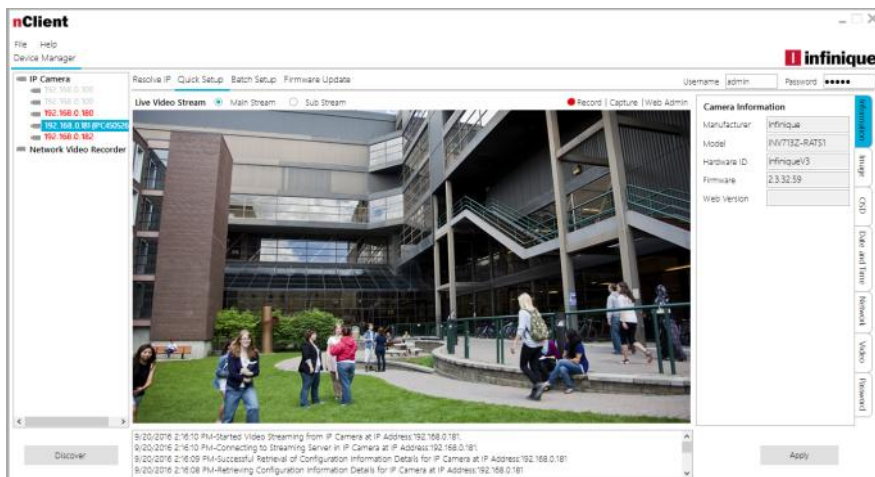


# nClient Device Manager

## Infinique Camera Management Tool

Infinique's nClient Device Manager is a windows based comprehensive camera management tool designed to help system installers provide a faster and efficient commissioning of Infinique's IP cameras. Using this tool installers can configure and manage from a single to several hundred IP cameras connected on a local area network.



### Features and Benefits

- Easy Configuration**  
 Setup and configure single or multiple IP cameras from a single application
- Resolve IP Conflict**  
 Automatically discover cameras on a network and resolve IP address conflict by click of a button
- Configuration Efficiency**  
 Set and update network settings, OSD, video, time and password for multiple cameras in batch
- Camera Title**  
 Update multiple camera titles in batch for faster commissioning
- Quick Troubleshooting**  
 Sort the displayed columns of camera parameters for quick troubleshooting
- Firmware Update**  
 Reliable update of firmware for single or multiple cameras in batch

### Discover IP Cameras

Using the nClient Device Manager, discover all the IP cameras on the network by click of a button and display them in a tree structure with their IP addresses and connection status.

### Resolve IP Conflict Automatically

The discovered cameras which have the same IP address and are in conflict could be easily resolved by the click of a button when using this software tool. Users have the flexibility to specify the IP address range the cameras need to be in by providing the start and end IP addresses.

### Batch Setup of Multiple Cameras

Set the date and time of all the cameras on the network with one click of a button. This excellent batch update feature also enables bulk configuration of IP camera's network and video settings, OSD, Title and other important parameters.

All the columns displayed in the grid view can be sorted and columns like "Title" are editable to provide a quick setup and faster commissioning.

### Intuitive User Interface

Extremely easy to use GUI design along with help tips, user messages, progress bars, camera status, columns which can be sorted help installers complete installation in a breeze.

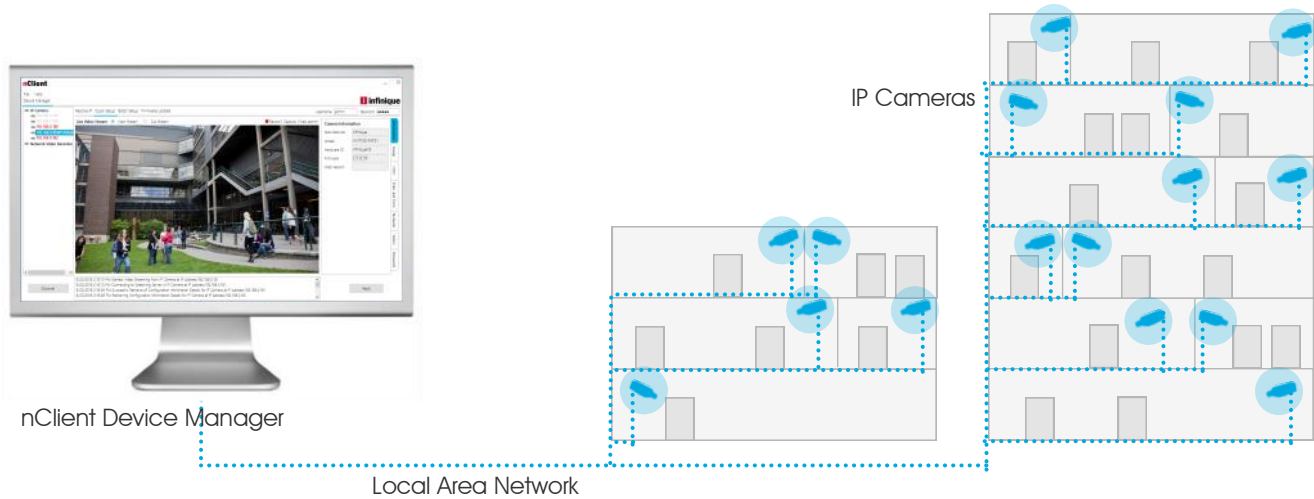
### Efficient Camera Management

Create Groups and assign IP cameras to the groups. These groups are fully user defined and could consists of a building name, the floor number where the camera is located. Infinique's nClient Device Manager makes use of the hostname of the IP camera to specify the group, it offers an innovative method for simplified management.

### Generate Reports

nClient provides system installers a way to document the installation information for records or future use. Using this feature users can save information about the assigned camera IP addresses, their video setting parameters and titles.

# Conceptual System Overview



## Quick Setup

In the Quick Setup menu, nClient allows the user to setup the configuration of a single camera. This menu also lets the user to watch the live video stream of the camera, record the video on local PC, capture snapshots, adjust the field of view by focus and zoom, and much more.

## Firmware Update

nClient allows the user to perform reliable firmware updates of IP cameras with the latest firmware. It also provides an option to restart IP cameras and restore the factory default settings.

## Device Tree Structure

The IP cameras discovered on the network are displayed in a tree structure with their IP address, camera title and camera status to facilitate easy identification and management.

## Easy to Install

Installation wizard of nClient makes it easy to install the software within minutes on any desktop PC or laptop with a windows operating system.

## Audit Logs

nClient maintains a comprehensive audit log of all the configuration changes made which forms a good audit trail system.

>Hours to configure  
500 cameras

42

Manual



nClient

# Technical Specifications

## nClient Device Manager Application Menu

Discover	Discovery of IP cameras available on a local area network and displays them as a list
Resolve IP	Find IP cameras which have duplicate IP address in a local area network and assign these IP cameras with a unique IP address in a range as specified by user
Quick Setup	Configure all the parameters pertaining to a single camera
Batch Update	Bulk configuration of network parameters, time, OSD, video setting, resolution and other parameters for multiple cameras
Camera Title	Update camera title of multiple cameras by editing directly in the specific column of the table against each camera
Sort Information	The camera information displayed in a table can be sorted by each column for easy identification of information
Firmware Update	Update the IP cameras with the latest available firmware
Device Management	Restart IP Camera and Restore IP Camera to default settings
Live View Stream	Watch live video streams from an IP Camera
Record / Capture	Record live video on local PC and capture snapshots of the video
Configuration Report	Save and print the configuration settings of the IP Cameras in an installation
Audit Trail	View and save the audit trail log of all the changes made to the IP cameras with timestamp
Languages Supported	English, Arabic

## System Requirement

Minimum System Requirement	Intel i5 or equivalent AMD RAM: 2 GB (8 GB recommended for larger systems)
System Recommendations	Windows 8.1 Pro 64-bit, Windows 10 Pro 64-bit Microsoft .NET runtime environment (included in installation package)